

Mr. Moon

by Stacy West






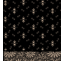





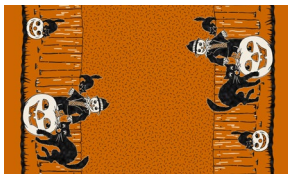
Quilt size: 74" x 88" (1.88m x 2.23m)

Skill Level: Advanced Beginner

Hallow's Eve Quilt
Designed by Coach House Designs
www.coachhousedesigns.com

Hallow's Eve Quilt Ordering Guide

SKU	Yards	Meters	6 Kits	12 Kits
 2605-33	1 1/2 yds	1.37m	1 bolt	2 bolts
 2609-39	1 1/2 yds	1.37m	1 bolt	2 bolts
 2612-93	1/4 yds	0.23m	1 bolt	1 bolt
 2613-99*	1 1/4 yds	1.14m	1 bolt	2 bolts
 2614-93	3/8 yds	0.34m	1 bolt	1 bolt
 2615-99	7/8 yds	0.80m	1 bolt	1 bolt
 2616-93	1 1/2 yds	1.37m	1 bolt	2 bolts
 2617-40	1/8 yds	0.11m	1 bolt	1 bolt
 2618-40	2 1/8 yds	1.94m	1 bolt	2 bolts
Backing Fabric Option				
2617-40	5 1/3 yds	4.88m	3 bolts	5 bolts
* Indicates binding fabric. FO = 18" x 22" (0.45m x 0.55m) All fabric quantities are based on 15yd bolts unless otherwise indicated.				



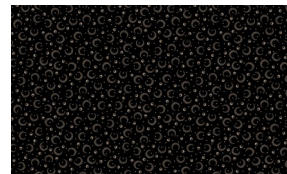
2605-33
Double Border Cat/Scarecrow
Orange



2609-39
Squares & Stars Geo
Orange



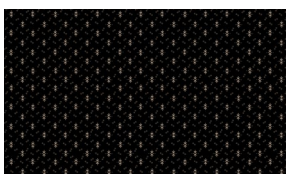
2612-93
Abstract Leaves
Black



2613-99*
Mini Crescent Moons
Black



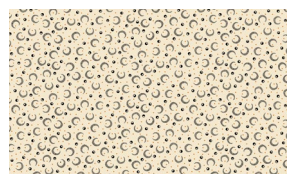
2614-93
Intricate Stripe
Multi



2615-99
Geometric Triangles
Black



2616-93
Linework Floral and Vines
Taupey Gray



2617-40
Crescent Moons and Dots
Cream



2618-40
Triangles and Dots
Cream

Pattern will be available in May 2026